

Ngāti Whātua Ōrākei



NGĀTI WHĀTUA ŌRĀKEI

Paeroa | Agenda

Loss and Resilience
Understanding and Action
Current Housing Projects
Future Aspirations



NGĀTI WHĀTUA ŌRĀKEI

Mai i Maunganui ki Tāmaki
From Maunganui to Tāmaki
The wider Ngāti Whātua region

Te Kahu Tōpuni o Tuperiri
The dogskin cloak of Tuperiri
The tribal region of Ngāti Whātua ki Tāmaki

Te Whatutoto o Te Kawau (Apihai)
The heart-blood lands of Te Kawau
The Ōrākei 700-acre block

NGĀ URI O TUPERIRI



ŌRĀKEI MARAE



ELECT

ELECTED REPRESENTATIVES DIRECTORS & SHAREHOLDERS



NGĀTI WHĀTUA ŌRĀKEI TRUST



NGĀTI WHĀTUA ŌRĀKEI TRUSTEE LTD



NGĀTI WHĀTUA ŌRĀKEI
WHAI MĀIA LTD

NGĀTI WHĀTUA ŌRĀKEI
WHAI RAWA LTD

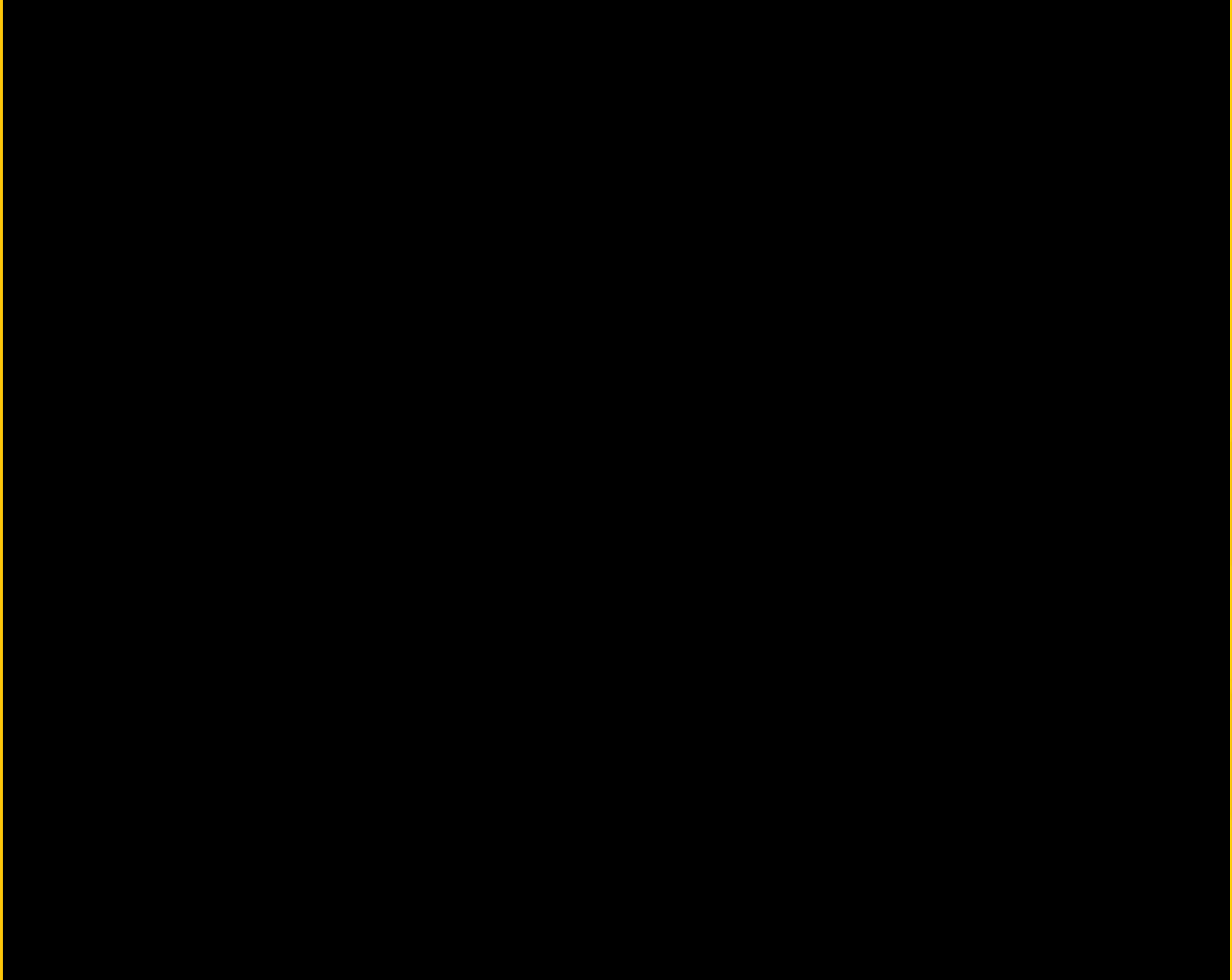
Ōrākei Marae is at the heart of our hapū and connects us through whakapapa as uri o Tuperiri. Steeped in its rich culture and history, Ōrākei marae remains the primary hub for the hapū.

As the governing body, the responsibility of the Trust is to lead and manaaki the 'group'. The Group is comprised of three (3) entities; Ngāti Whātua Ōrākei Trust, Whai Māia Limited and Whai Rawa Limited.

Ngāti Whātua Ōrākei Trust; has two wholly-owned subsidiary companies. These subsidiaries have their own boards of governance with a mix of whānau and independent directors. All subsidiary board members are appointed by the Trust.

Ngāti Whātua Ōrākei Whai Māia Limited; is a charitable trust, responsible for the social and cultural development of our people. The main areas of focus are Employment and Education, Health and Wellbeing, Arts and Culture, Toki Taiao, and managing key relationships. Whai Māia take priority in building the capacity of our people, so they are able to take control of their own destiny.

Ngāti Whātua Ōrākei Whai Rawa Limited; is a property development and investment company. The principal objective of Whai Rawa is to maximise the financial or economic returns of the Ngāti Whātua Ōrākei group. The funds generated by Whai Rawa are used to support the tribal development goals of Whai Māia in education, health and employment, with the purpose of supporting Ngāti Whātua Ōrākei whānau for generations to come.



KIA RERE ARORANGI TE
KĀHU PŌKERE KI NGĀ
TAUMATA TIKETIKE

To Soar and Fly to the
Highest Heights



NGĀTI WHĀTUA ŌRĀKEI

- 7181 tribal members
- Land owners & Ahi Kaa in Tāmaki
- \$1.5 Billion asset base
- Orākei Marae is our ancestral home
- Ngāti Whātua Ōrākei Trust Board
- Whai Rawa - Commercial Arm
- Whai Maia - Tribal Development Arm



NGĀTI WHĀTUA ŌRĀKEI

Understanding Our Whānau and Needs

6. Wealth transfer



Wealth Transfer across generations.

Build business and asset development. More NWO working for NWO businesses.

5. Economic and political positions of power



Take up positions of economic power: business ownership, governance.

Less pressing or urgent needs to learn immediately

This also reduces stress and burden, lifting executive function.

1. Ensuring basic physical needs are met (food, housing)



This supports immediate improvement in wellbeing of the body/tinana.

Reclaiming to 100.

2. Strengthening whānau, relational and cultural wellbeing



Less toxic stress environments for children to grow up in. Parents with greater cognitive bandwidth to support their children's development and to build connection with others.

This also reduces stress and burden, lifting executive function.

1. Ensuring basic physical needs are met (food, housing)



This supports immediate improvement in wellbeing of the body/tinana.



Each roopu gave a different perspective and reflected similar themes

- a) Taiao - natural systems are restored, protected and enhanced
- b) Enables social equity, builds resilience and capacity
- c) Grow internal Ngāti Whātua Ōrākei economy
- d) Prioritise health and wellbeing of whānau
- e) Utilise and optimise access and land use
- f) Embed tohu and whakapapa in the built environment





NGĀTI WHĀTUA ŌRĀKEI



Okahu Bay
➔





4

2

3

1

5

6



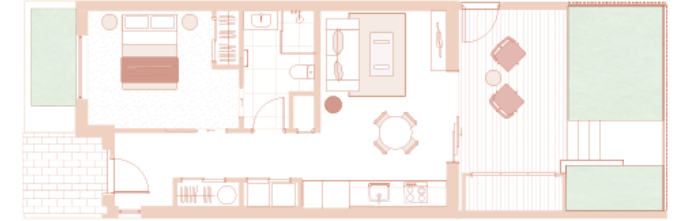
Hawaiki Street Whānau Housing

Kāinga Tuarua – Hawaiki

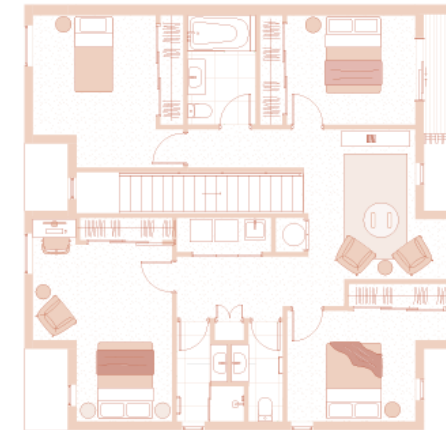


Four Bedroom + One Bedroom Home

One Bedroom – Ground Floor



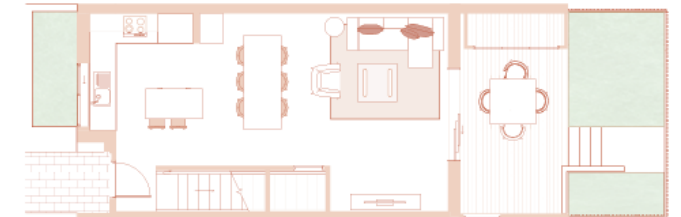
Four Bedroom – First Floor



Intergenerational



Four Bedroom – Ground Floor



Roles and Contributions

The sale of homes to hapū members financed by bank mortgage.

Ngāti Whātua Ōrākei	Banks	Funding
<ul style="list-style-type: none"> Land (\$14m) made available without charge for 150 years. 		
<ul style="list-style-type: none"> No developer's margin. Substantial design and civils costs etc. absorbed and not passed on to whānau. 	<ul style="list-style-type: none"> Provided finance for construction cost of homes advanced at a good rate. 	<ul style="list-style-type: none"> Māori infrastructure funding grant
<ul style="list-style-type: none"> Equity share of up to 25% provided to whānau 		<ul style="list-style-type: none"> Loan to support providing partial whānau share equity
<ul style="list-style-type: none"> Substantial management time, and legal and tax advice costs. 		<ul style="list-style-type: none"> Grant to assist with buyer support, such as buyer legal fees.
<ul style="list-style-type: none"> Underwrite each mortgage to the bank. 	<ul style="list-style-type: none"> Mortgage finance to whānau members with good interest rates. 	



NGĀTI WHĀTUA ŌRAKEI

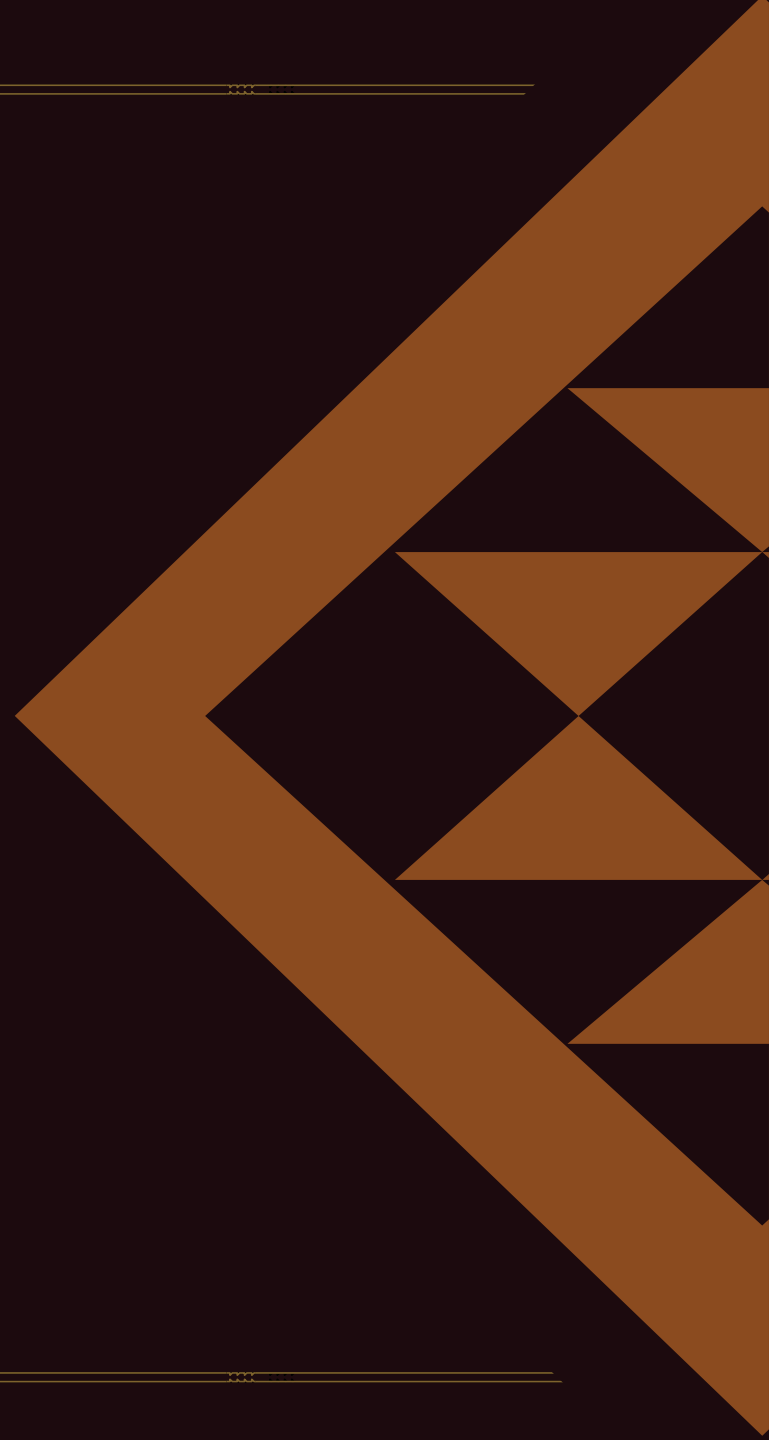
- Rapid changes in the way of learning, being equipped for the future
- Escalating health risks and challenges including mental health
- Unequal access to homes and health
- Unequal access to opportunity and wealth.
- Climate change
- Global challenges (regulation, chaos, war, viruses)

- Maturanga – Focus on ways of learning and future of work with our kawa, tikanga and reo as the foundation
- A model and practice that is holistic
- Living differently in our homes, communities and city.
- Whenua ki te Whenua (Whole life journey)
- Leading new ways that are good for Tāmaki Makaurau, Aotearoa and Te Ao.

Future Aspirations

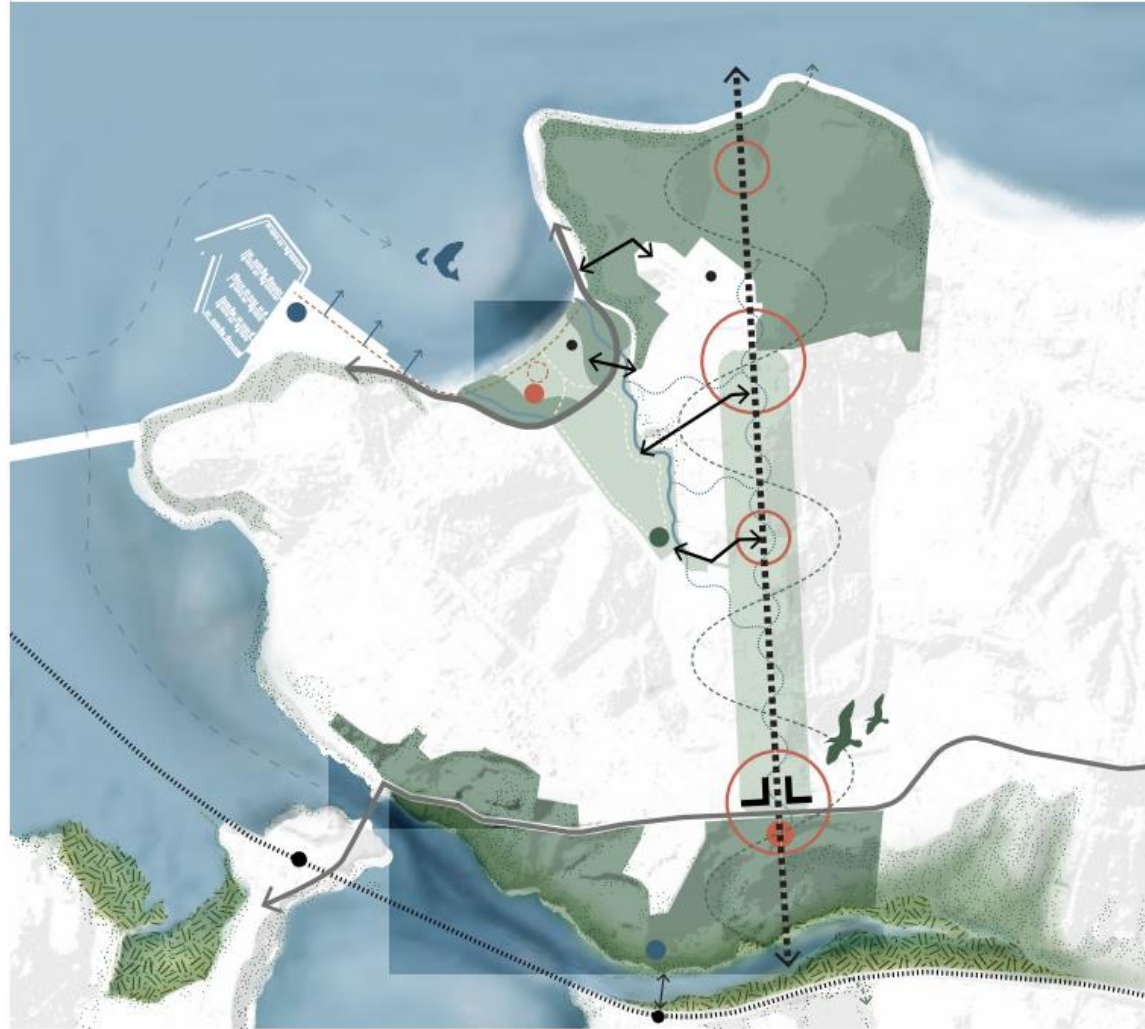


NGĀTI WHĀTUA ŌRĀKEI



Key Activations from the Masterplan

- 1 Reconnect Ngāti Whātua Ōrākei to the moana and reestablish an identity in Ōkahu Bay
- 2 Celebrate Kupe Street as a ridge that supports whānau and connects whānau with whenua and moana
- 3 Reconnect the Kupe Street ridge line to the historic papakāinga
- 4 Create a built form that is uniquely Ngāti Whātua Ōrākei
- 5 House all whānau on the whenua
- 6 Create a Ngāti Whātua Ōrākei gateway to Kupe Street and Takaparawhau
- 7 Embed cultural infrastructure into the fabric of the community
- 8 Celebrate water as an integral part of life
- 9 Create a resilient energy network
- 10 Foster the growth of a circular response to kai and waste



Masterplan Visualisation - Residential Courtyard



1 Safe Courtyards

Courtyards that are safe for whānau and tamariki to occupy as there is no vehicular access to these spaces.

2 Range of Typologies

Built form and typologies to support whānau at different stages of life and encourage social cohesion.

3 Mara Kai

Growth of kai and rōngoa using water and compost harvested on site. Opportunity for sharing of knowledge and resources.

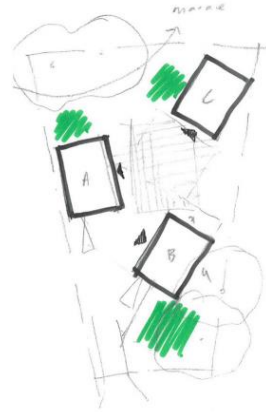
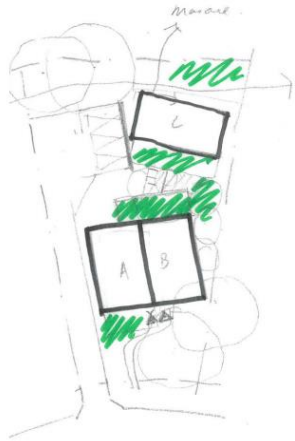
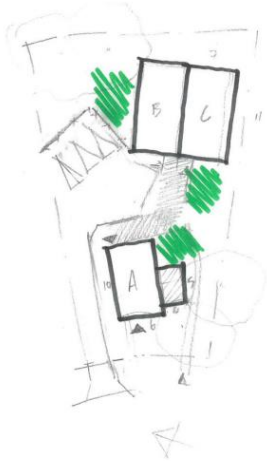
4 Roof Space

Occupiable roof spaces providing views from the ridge and centralised laundry spaces.

5 Stormwater Treatment

Water slowed and captured through planted terraces contributing to the identity of place.

Planning Options



› Larger family homes at the rear (type B/C)

› Greater height towards rear of site

› Home for kaumātua at street edge (will be hard to make accessible)

› Access to the rear of the site - grouped parking

› Larger family homes x 2 at street edge - two storey living upstairs

› Kaumātua dwelling interacting with marae with ground floor bedroom - suitable for accessible / universal design

› Access into the rear of site - grouped parking

› 3 different dwellings with smaller footprints

› Rear house without direct vehicle access

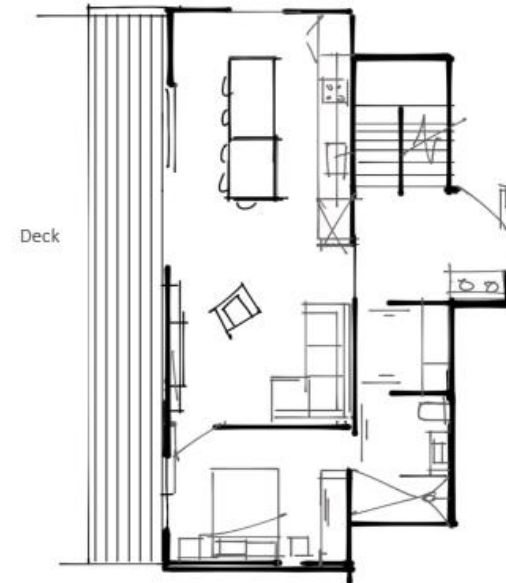
› Flexibility to work around mature trees

› Common areas as well as private outdoor living

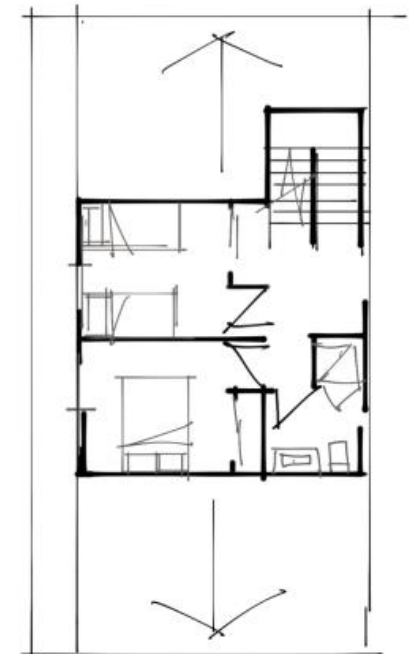
› Accessibility / universal design will be challenging. Types would suit living upstairs with balconies or upper floors

Single - 3 bedroom kaumātua

Ground Floor



First Floor





NGĀTI WHĀTUA ŌRĀKEI